

DIVISION 12: FURNISHINGS | TABLE OF CONTENTS

<u>General Provisions</u>	2
<u>Fabrics</u>	2
<i>Preferred Characteristics Abrasion Requirements Lightfastness Requirements</i>	
<u>Manufactured Casework</u>	3
<u>Office Furniture</u>	3
<i>Preferred Characteristics Typical</i>	
<u>Seating</u>	5
<i>Preferred Characteristics Task Chairs Guest Chairs Conference Chairs Soft Seating Multipurpose Seating</i>	
<u>Tables</u>	6
<i>Preferred Characteristics Power Modules</i>	
<u>Institutional Furniture</u>	6
<i>Classroom Furniture Laboratory Furniture</i>	
<u>Systems Furniture</u>	6
<i>Preferred Specifications Standard Cubicle Typical Touch-Down/Benching</i>	
<u>Multiple Seating</u>	8
<i>Fixed Audience Seating Seat and Table Assemblies</i>	
<u>Public Space Furnishings</u>	9
<i>Site/Outdoor Furnishings Assembly Furniture Assembly Furniture Pre-function Furniture</i>	
<u>Trash/Recycling Receptacles</u>	10
<i>Exterior Interior</i>	

12 00 00 FURNISHINGS

1. General Provisions
 - a. All furniture selections are to be reviewed and approved by the UTD Project Manager/Interior Designer.
 - b. All specified products must have a demonstrated history in a similar institutional setting.
 - c. All specified products must meet the minimum applicable requirements set by the latest revision of the ANSI/BIFMA Product Safety and Performance Standards and Guidelines, Americans with Disabilities Act (ADA), Texas Accessibility Standards (TAS), International Building Code (IBC) and National Fire Protection Association (NFPA).
 - d. All furniture to be contract grade with a minimum warranty of 10 years.
 - e. All accessories and ancillary products to have a minimum warranty of 5 years.
 - f. Avoid custom sizes and finishes, when possible. Exceptions are to be approved by UTD Project Manager/Interior Designer.
 - g. Lead times for products are not to exceed 8 weeks from time of order. Exceptions are to be approved by UTD Project Manager/Interior Designer.

12 05 00 COMMON WORK RESULTS FOR FURNISHINGS

12 05 13 Fabrics

1. Preferred Characteristics
 - a. Upholstery in darker colors for seats or surfaces in common areas.
 - b. Stain-resistant finishes/coatings that are easily cleaned.
 - c. Avoid fabrics with loose weaving that could easily snag.
 - d. All fabrics to be approved by the furniture manufacturer. UTD Project Manager/Interior Designer must approve any exceptions.
 - e. All fabrics to be in stock at time of order.
2. Abrasion Requirements
 - a. Upholstery on furniture seats are to have a minimum of 100,000 double rubs Wyzenbeek and minimum 45 Martindale cycles.
 - b. Back upholstery to have a minimum of 50,000 double rubs Wyzenbeek and minimum 30 Martindale cycles.
3. Lightfastness Requirements
 - a. For furnishings placed directly by or within close vicinity to exterior windows, lightfastness must meet ACT minimum of 200 hours and/or Grade 5.
 - b. For all polyurethanes, lightfastness must meet ACT minimum of 200 hours and/or Grade 5. Lower grade polyurethanes tend to only meet the minimum 40 hrs.
 - c. For all other furnishings and textiles, lightfastness must meet ACT minimum of 40 hours and/or Grade 4.
4. Polyurethane Physical Characteristics
 - a. Meets a minimum Hydrolysis Testing of 5 weeks without evidence of cracking, peeling or delamination.
 - b. Always coordinate and specify upholstery techniques between the furniture manufacturer and textile manufacturer prior to ordering to prevent issues with puddling, puckering and seam slippage. These include, but aren't limited to:
 - i. Ensure the furniture manufacturer is using a high-density foam.
 - ii. Never railroad polyurethanes.
 - iii. Never top-stitch, which stresses the skin. Always double-stitch seams and ensure a minimum of (6) stitches per inch.
 - iv. Avoid extreme folding of material over sharp corners/radiuses without foam backing support to prevent potential wear points.
 - v. Reference 12.05.13.3.

12 30 00 CASEWORK

12 32 00 Manufactured Casework

1. General Provisions
 - a. Built-in millwork is preferred, but manufactured casework can be considered with the approval of the UTD Project Manager/Interior Designer.
2. Fabrication
 - a. Manufacturer to provide shop drawings, specs and installation methods for approval by the UTD Project Manager/Interior Designer prior to fabrication.
 - b. Manufacturer to field verify all shop drawing dimensions to ensure proper fit and coordinate cutout locations with plumbing and electrical conditions.
 - c. Countertops and backsplashes must be a continuous surface with minimal seams, when feasible.
 - d. If countertops cannot be continuous, all seaming locations must be noted and edges must be either unfinished or match the countertop to ensure a seamless installation.
 - e. All hardware and accessories required to complete the installation must be provided by the manufacturer.
3. Installation
 - a. Install in accordance with manufacturer's approved instructions and shop drawings.
 - b. Provide rigid, secure installation. The cabinet's wall mounting cleat shall be able to reach proper amount of wall stud in order to properly spread the load.
 - c. Provide appropriate scribes and fillers to conceal any hanging hardware or gaps.
 - d. All joints must be properly caulked and sealed.
 - e. Must meet all appropriate ADA requirements for the space.
4. Adjustments
 - a. Levelers to have 2" min. adjustability.
 - b. Installers to adjust all hardware, doors, and drawers for smooth, effortless operation and proper alignment.

12 50 00 FURNITURE

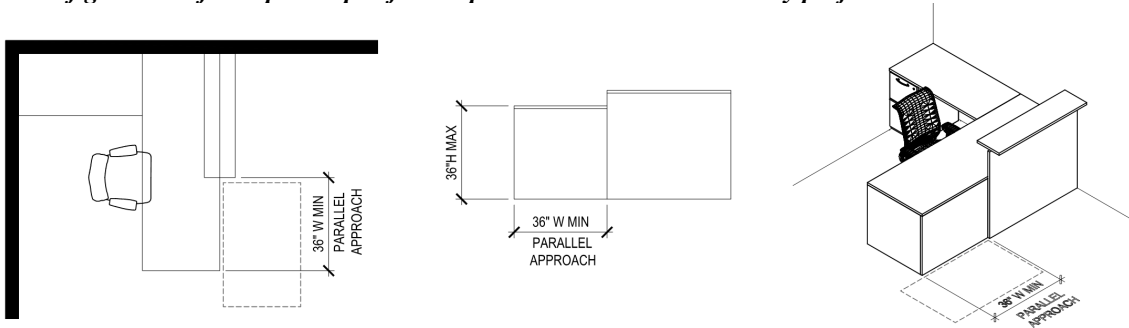
12 51 00 Office Furniture

1. Preferred Characteristics
 - a. Worksurfaces to be high-pressured laminate (HPL) with a PVC/urethane edge, unless wood is specifically requested for executive areas. Do not specify low-pressured laminate (LPL), thermally fused laminate (TFL) or self-edges.
 - b. All office desk configurations are to have either a partial or full height modesty panel in the front, if facing the door, window or glass storefront.
 - c. Worksurface laminates to be non-textured unless requested otherwise.
 - d. When possible, always specify the bridge laminate in a U-Shaped configuration to be short grain so that it runs in the same direction as the desk and credenza.
 - e. Always provide a 6" min. desk overhang to accommodate knee space for guests.
 - f. Avoid using modesty panels against walls for power/data access.
 - g. Worksurfaces to have appropriate grommet holes/wire management to access power/data locations.
 - h. Office furniture should always be coordinated with the architect/engineer to address switched power locations.
 - i. Standard office components include overhead/hutch, undersurface box/box/file pedestal, undersurface lateral file, tack board, LED task lighting under hutch, task chair and guest chair(s).
 - j. Additional components such as height-adjustable desks, center drawers, whiteboards, keyboard trays, monitor arms, meeting tables, bookcases, storage cabinets, wardrobes, and additional guest chairs can be requested, if necessary for job functionality and fit in the proposed space.
 - i. For writing surface standards, please reference ***10 11 00 Visual Display Boards*** in our ***Division 10 Standards***.
 - k. Lockable storage to be keyed alike by office.

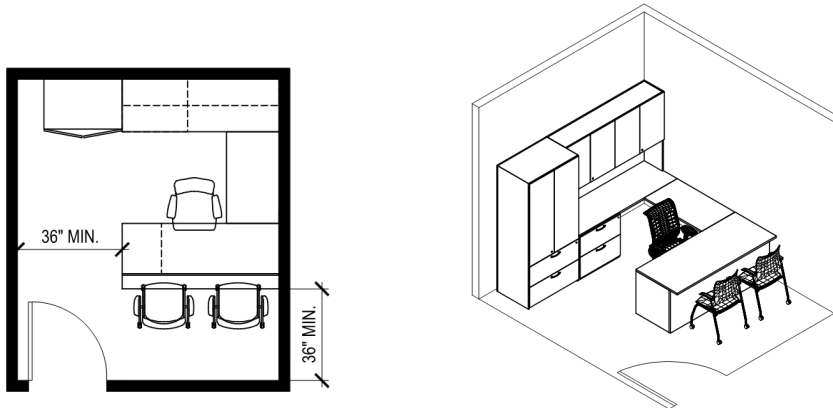
1. If a reception desk has a standing height transaction top, there must also be a portion of the desk that is 36"W minimum X 36"H maximum for ADA accessibility. Approach to the ADA portion of the desk must also comply with most current ADA Standards for Accessible Design.

TYPICALS

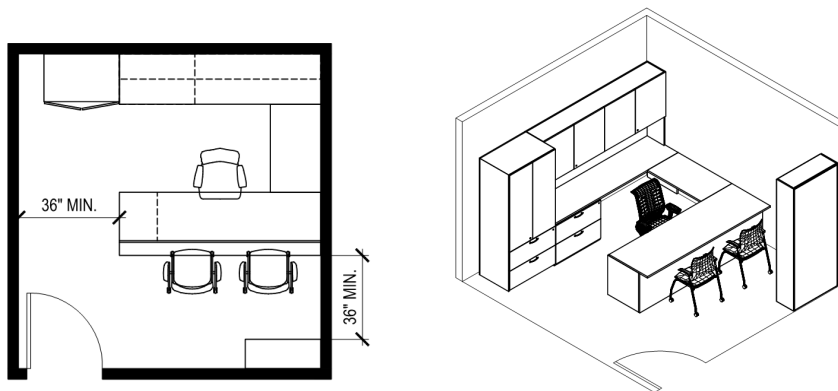
Please note: Examples included are for conceptual purposes only and are not intended to dictate the final design or configuration of the space. Specific components will be determined by project.



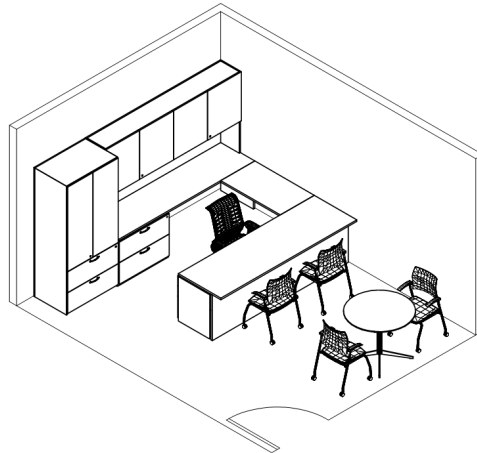
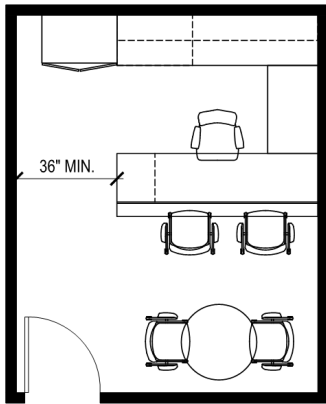
Reception Desk Typical (Plan, Elevation, and 3D View)



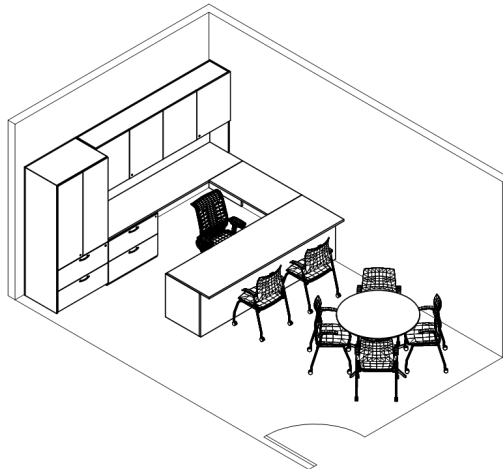
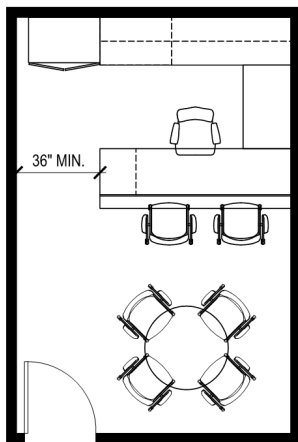
Staff/ Faculty Office Typical – approx. 115 SF



Director/ Department Head Office Typical – approx. 150 SF



AVP/ Department Chair Office Typical – approx. 180 SF



VP / Dean Office Typical – approx. 200 SF

12 52 00 Seating

1. Preferred Characteristics
 - a. Refer to **12.05.13 Fabrics**
 - b. Specify caster and/or glides as appropriate for the flooring surface.
2. Task Chairs
 - a. Fully ergonomic features: adjustable arms and seat; back with adjustable lumbar support.
3. Guest Chairs
 - a. Wood or metal frame, depending on function of space and design intent.
 - b. Adjustability of arms and seat are not required.
4. Conference Chairs
 - a. Requires minimal adjustability, i.e. seat height only.
 - b. Fixed arms.
5. Soft Seating
 - a. Avoid detachable components and lightweight furniture in unsupervised common areas.

- b. Clean-out backs and stain-resistant coated fabrics are preferred on furniture within close vicinity to food areas.
 - c. Vinyl, polyurethanes, or silicones are preferred on seats and arms.
 - d. Provide access to power when possible.
 - e. Sofas and benches to be 2-seat maximum to prevent “napping areas”.
6. Multipurpose Seating
- a. Poly finishes (in darker, saturated colors) and stain-resistant coated fabrics are preferred on furniture in common areas.
 - b. Sled base is preferred over legs on hard flooring.

12 53 00 Tables

- 1. Preferred Characteristics
 - a. All edge banding on laminate tables to be PVC or urethane. Do not specify self-edge.
 - b. Do not specify laminate bases.
 - c. Tops to be high-pressured laminate (HPL), with a PVC/urethane edge, unless otherwise requested by UTD. Do not specify low-pressured laminate (LPL) or thermally-fused laminate (TFL).
- 2. Power Modules
 - a. If a table requires HDMI in addition to power, do not specify a pop-up grommet, as it does not contain enough space to route the cables. Specify a power module with a hinged or sliding lid, i.e. Doug Mockett PCS54. Spec to be approved by UTD.

12 56 00 Institutional Furniture

- 1. Classroom Furniture
 - a. Chairs to be flip/nest and/or stackable armless chairs, unless otherwise requested by UTD.
 - b. Tables to be flip/nest with locking casters, unless otherwise requested by UTD. Refer to **12 53 00 Tables**.
 - c. Seating upholstery to be either a coated fabric or treated with a stain resistant finish.
 - d. Consider power locations.
 - e. For writing surface standards, please reference **10 11 00 Visual Display Boards** in our **Division 10 Standards**.
- 2. Lecture Hall Furniture
 - a. Chairs to be armless, fixed height, unless otherwise requested by UTD.
 - b. Seating upholstery to be either a coated fabric or treated with a stain resistant finish.
 - c. Refer to **12 53 00 Tables**.
 - d. Consider power locations.
 - e. For writing surface standards, please reference **10 11 00 Visual Display Boards** in our **Division 10 Standards**.
- 3. Laboratory Furniture
 - a. Worksurfaces to be either phenolic, epoxy resin, solid surface or chemical laminate, depending on lab application and handled materials.
 - b. Lab seating to be easily cleanable, with seats in stain-resistant, coated fabrics such as vinyls, polyurethanes, or silicones.

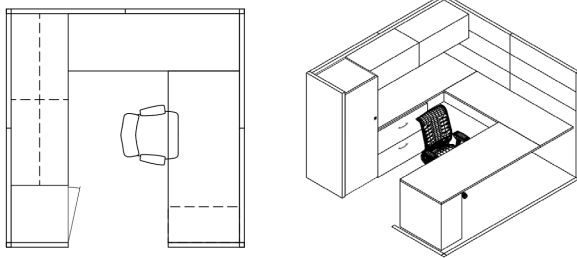
12 59 00 Systems Furniture

- 1. Preferred Specifications
 - a. All hardwired power/data to be in the base of the panel, unless requested otherwise for specific work functionality. Above worksurface power for laptops or phone charging can be plug-in clamp-on modules.
 - b. No more than (4) typical workstations are to be on the same circuit, 20 amp circuit breaker. Workstations with special equipment that requires more power must be coordinated with electrical engineer/electrician to ensure proper distribution of circuits.

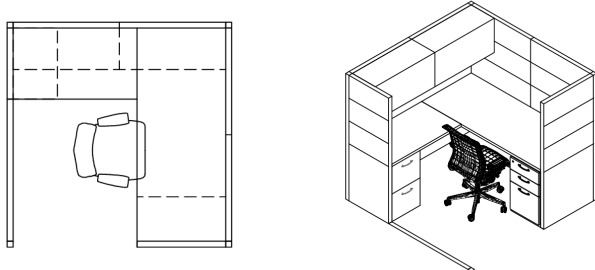
- c. Coordinate building power and data locations with the final design of workstation layouts.
 - d. All worksurfaces to have grommet holes for power/data access.
 - e. All panel systems to have capabilities for data pass-through.
 - f. All panel trims and storage to be painted metal, unless requested otherwise, with the approval of UTD Project Manager/Interior Designer.
 - g. All worksurfaces to be non-textured high-pressed laminate (HPL) with a PVC/urethane edge. Do not specify low-pressure laminate (LPL), thermally fused laminate (TFL) or self-edges.
 - h. All panel fabrics are to be graded-in. Approved COM may be used if specifically requested and approved by UTD Project Manager/Interior Designer.
 - i. All base panel fabric below the worksurface to be dark colored.
 - j. Panels to be segmented and stackable, when feasible, for ease of reconfiguration.
 - k. Pre-approved systems furniture manufacturers include:
 - i. Allsteel, Steelcase, Herman Miller and Knoll.
 - ii. Exceptions are to be approved by UTD Project Manager/Interior Designer.
2. Standard Cubicle (Full-time Staff & Faculty)
- a. All workstations to have a minimum of (2) duplex power receptacles and (2) data cutouts.
 - b. Standard workstation components include overhead bins (only on panel heights 66”H +), undersurface pedestal, undersurface lateral file, tackable panels and LED task lighting under overheads.
 - c. Additional components such as height-adjustable desks, shelving, additional storage, whiteboards, slat walls, work tools, keyboard trays, and monitor arms can be requested, if necessary for job functionality. For monitor arms and height adjustable desks, specify wire managers
 - d. Nominal Panel Heights
 - Partial Visual Privacy: 54”H
 - Full Visual Privacy: 66”H +
 - 1. Not to be placed by exterior windows when feasible
 - 2. Locking or Non-Locking Doors Optional
 - a. All locking doors must have lock cores changed out to standard UTD lock core.

CUBICLE TYPICALS

Please note: Examples included are for conceptual purposes only and are not intended to dictate the final design or configuration of the space.



8' x 8' Typical

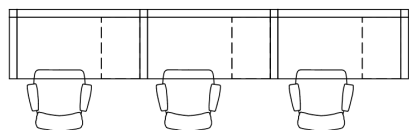


6' x 6' Typical

3. Touch-down / Benching Stations (Grad Students, Part-Time Staff, Student Workers)
 - a. All workstations to have a minimum of (1) duplex power receptacle.
 - b. All workstations to have a divider panel, 48”H minimum A.F.F.
 - c. Specific workstation components to be determined by project.

TOUCH-DOWN / BENCHING TYPICAL

Please note: Examples included are for conceptual purposes only and are not intended to dictate the final design or configuration of the space.



Typicals

- 24”D X 36W (w/o storage)
- 24”D X 48”W (storage optional)
- 30”D X 60”W (storage optional)

Storage
Optional

12 60 00 MULTIPLE SEATING

12 61 00 Fixed Audience Seating

1. Preferred Specifications
 - a. Must meet all applicable codes.
 - b. All multiple seating specifications must be reviewed and approved by the UTD Project Manager/Interior Designer.
 - c. Stagger seating to aid with sightlines.
 - d. Floor mount only.
 - e. Seat construction must be steel or cast iron. Plastic is not permitted.
 - f. Hard surfaced outer back of chair (shell) in darker neutral colors.
 - g. Arms: Non-upholstered.
 - h. Upholstered Seats: Vents required for breathability. Refer to 12 05 13 Fabrics.
 - i. Tablet Arms – 12 68 00.1 Tablet Arm Seating.

12 68 00 Seat and Table Assemblies

1. Tablet Arm Seating
 - a. Tablet arm construction should withstand substantial weight and use.
 - b. Tablet surface to be either high-pressed laminate (HPL) or poly. Do not specify low-pressure laminate (LPL), thermally fused laminate (TFL) or self-edges.
 - c. Always consider left and right hand requirements.
 - d. Tablet arms should be a replaceable and separate component from the chair itself.
 - e. Must confirm tablet arm weight capacity prior to specification.

12 90 00 OTHER FURNISHINGS

12 93 00 Public Space Furnishings

1. Site/Outdoor Furnishings
 - a. Pre-approved Standards:
 - i. Landscape Forms Mingle, Seating & Supports, Backed Perforated Aluminum Seat Insert, Catena Top, No Umbrella Hole, Surface Mount, Top, Seat and Support Color in Stone, 42" diameter tabletop (3 and 5-seat versions for areas that require ADA seating at the table).
 1. **Optional Umbrella:** Add umbrella hole. Solstice Umbrella, Cygnus Style, Perforated Panel, Table Mount; Pole, Strut, Stand, Top Cap, and Panel Color in Stone.



- ii. Landscape Forms Chipman Chair with Arms & Chipman Table 36" dia.; No Umbrella Hole, Freestanding. Color selection to be approved by UTD Project Manager/Interior Designer.



- b. Minimum weight of 25 lbs. per item.
- c. Exposed metal parts should have powder coat finish.
- d. Preferred wood finish is Ipe.

- e. Do not bolt furniture down, unless specifically requested.
 - f. Non-upholstered furniture is preferred. Upholstered pieces must be specified in outdoor-grade textiles that are approved by the UTD Project Manager/Interior Designer.
 - g. Furniture must have adequate means of draining water to prevent moisture retention.
 - h. Other types of outdoor table and seating systems are to be approved by UTD Project Manager/Interior Designer.
2. Assembly Furniture
- a. Tables
 - i. Folding with self-locking legs
 - ii. High-density plastic laminate tops w/urethane edges
 - iii. Solid plywood core top
 - iv. Steel construction
 - v. Coordinate carts/dollies for transport and storage
 - b. Chairs
 - i. All poly shell and seat
 - ii. Metal frame, sled base
 - iii. Ganging capabilities
 - iv. Easy hand-gripping to be considered for Facilities moving crew
 - v. Coordinate carts/dollies for transport and storage
3. Pre-function Furniture
- a. Tables
 - i. Tops to be removable from base
 - ii. High-density plastic laminate tops w/urethane edges
 - iii. Solid plywood core top
 - iv. Metal disc base
 - v. Coordinate carts/dollies for transport and storage
4. Trash & Recycle Receptacles
- a. Exterior
 - i. Victor Stanley S-42; Ironsites Series 36-gallon litter receptacle with rain bonnet lid, high-density plastic liner; VS Bronze powder coat color.
 - ii. UTD Facilities will place standard brown ‘trash’ and blue ‘recycle’ labels on the receptacles.



- b. Interior (Common Areas – High Capacity) – Option 1
 - i. **Trash:** Magnuson Group Storlek ST-10, 70-gallon unit w/internal rigid liner; Body in Anodized Silver; Lid and trim in Dark Anthracite with 14.75” X 14.75” square opening; Trash pictogram in white w/o words on front; “Trash” label on lid; Knob on door instead of lock.

- ii. **Recycling:** Magnuson Group Storlek ST-10, 70-gallon unit w/internal rigid liner; Body in Anodized Silver; Lid and trim in Capri Blue with co-mingle opening; Recycling pictogram in white w/o words on front; “Recycling” label on lid; Knob on door instead of lock.



- c. Interior (Common Areas – High Capacity) – Option 2
 - i. **Trash & Recycling Combined Double Unit:** Max-R Oxford 55-Gallon Top Load with rigid liners, split top, and front service doors; square opening for trash, co-mingle opening for recycling; Dark gray body and top for trash; Dark gray body and navy top for recycling; Trash and recycling pictograms on front; Trash and recycling labels on respective lids.



- d. Interior (Classrooms; Conference Rooms)
 - i. Magnuson Group Valuta VA1818L, 40 gallon unit w/internal rigid liner; Body and Top Color – Anodized Silver; Top Configuration – Waste; Icon – Waste; Icon Placement – Front; Icon Color – White; No locks.
 - ii. Magnuson Group Valuta VA1818L, 40 gallon unit w/internal rigid liner; Body and Top Color – Anodized Silver; Top Configuration – Waste (Co-Mingle); Icon – Recycling Arrows; Icon Placement – Front; Icon Color – Blue; No locks.



- e. Interior (Offices)
 - i. Rubbermaid Commercial 2956 Wastebasket, Medium, 28-1/8 qt., FG295600 Black
 - ii. Rubbermaid Commercial 2955-73 Recycling Container, Small w/Universal Recycle Symbol, 13-5/8 qt., FG295573 Blue
 - iii. Must be placed in pairs per office.

